

Ceramic Urinals with Radar Flushing Unit SLP 12R, SLP 37R



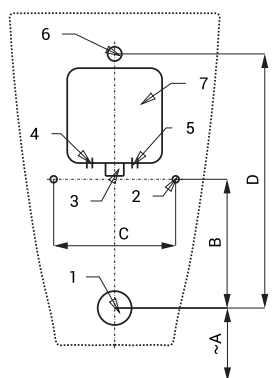
SLP 12 - VILA WITHOUT A COVER SLP 37 - VILA WITH A COVER

Characteristics



- economy flushing by 1 liter of water
- easy installation
- whole flushing unit is placed behind the urinal
- system reacts only on the direct use of the urinal (it analyses changes, which are proceeded inside of the urinal, when a liquid is flowing through)
- adjustable flushing time 0,5 - 15,5 s
- parameters adjustment by remote control SLD 04 without the necessity to dismantle the urinal from the wall (acoustic setting indication)
- automatic flushing after each 6 hours non-use
- monitoring of battery capacity (for models with index B)
- water flow could be regulated by ball valve
- radar flushing unit recharges a water to the siphon after each flushing

Installation Drawing



- 1 - waste outlet Ø 50 mm
- 2 - holes for fitting
- 3 - water supply
- 4 - power supply 230 V AC (SLP 12/37RZ)
- 5 - power supply 24 V DC (SLP 12/37R)
- 6 - inlet fitting
- 7 - mounting box

Dimensions (mm)	A	B	C	D
SLP 12 - VILA	415	190	180	375
SLP 37 - VILA	415	190	180	375

* for the height of the front edge of the urinal 650 mm above floor

Supply Specification

SLP 12R	- Supply No. 01124	ceramic urinal with the radar flushing unit, plastic mounting box with brass screw coupling, electromagnetic valve and ball valve, inlet fitting with a rubber sealing, siphon, mounting set, plastic cover (SLP 37xx), power supply (for models with index RZ), 4 pcs. AA alkaline batteries 1,5 V, 2700 mAh with battery case (for models with index RB)
SLP 12RZ	- Supply No. 01125	
SLP 12RB	- Supply No. 11127	
SLP 37R	- Supply No. 01374	
SLP 37RZ	- Supply No. 01375	
SLP 37RB	- Supply No. 11377	

Recommended Accessories

SLZ 01Y	- Supply No. 05012	power supply 24 V DC for operating of max. 5 pcs. of flushing units
SLZ 01Z	- Supply No. 05011	power supply 24 V DC for operating of max. 9 pcs. of flushing units
SLZ 04Y	- Supply No. 05042	power supply 24 V DC on DIN rail, for operating of max. 5 pcs. of flushing units
SLZ 04Z	- Supply No. 05041	power supply 24 V DC on DIN rail, for operating of max. 9 pcs. of flushing units
SLZ 04X	- Supply No. 10049	power supply 24 V DC on DIN rail, for operating of max. 15 pcs. of flushing units
SLZ 06	- Supply No. 05060	power supply 24 V DC for operating of max. 1 pc. of flushing unit
SLD 04	- Supply No. 07040	remote control for an adjustment of parameters
SLA 11	- Supply No. 06110	deodorising urinal screen - orange, mango scent
SLA 11A	- Supply No. 06111	deodorising urinal screen - red, kiwi and grapefruit scent
SLA 11B	- Supply No. 06112	deodorising urinal screen - transparent, honeysuckle scent
SLA 11C	- Supply No. 06113	deodorising urinal screen - blue, cotton bloom scent
SLR 01	- Supply No. 08010	mounting frame to the plasterboard for urinal and flushing unit with mounting box behind urinal
SLA 36	- Supply No. 06360	set of 4 pcs. alkaline batteries AA 1,5 V, 2700 mAh (for models with index B)

Technical Specification

Mounting box dimension	140 x 140 x 75 mm
Operating voltage	
▪ SLP 12R, 37R	24 V DC
▪ SLP 12RZ, 37RZ	230 V AC/50 Hz
▪ SLP 12RB, 37RB	6 V
Power input	
▪ operating by 24 V DC	8 W
▪ operating by 6 V	3 W
Recommended flow pressure	0,1 - 0,6 MPa
Rate of flow	18 l/min (inf.data)
Water inlet	male thread G 3/4"
Water outlet	inlet fitting with a rubber sealing

